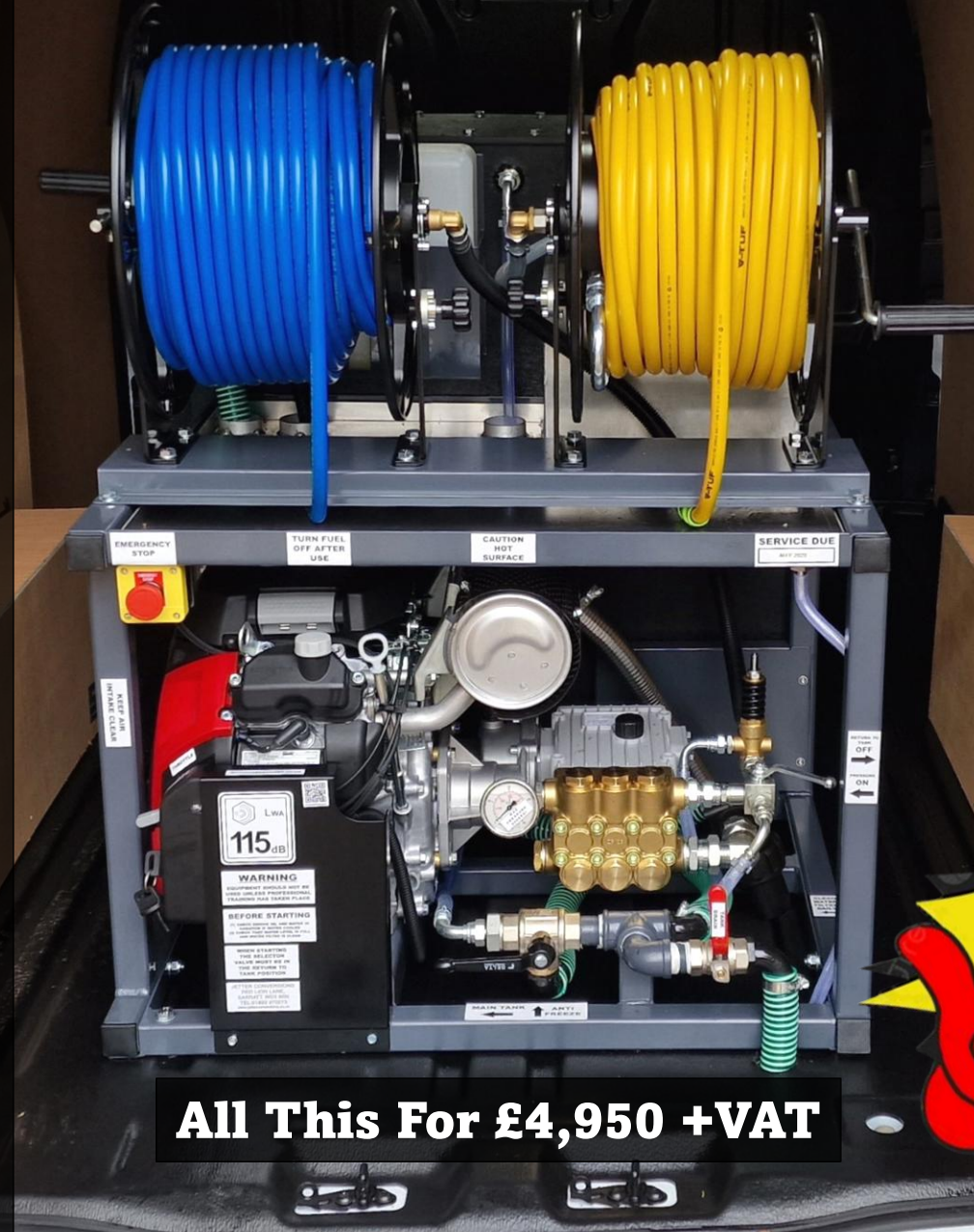


# Jetter Conversions 3008 Jetting Machine

## Key Features:

- 60 Metres Of High Pressure 3/8" Jetting Hose
- 50 Metres Of 1/2" Inlet Hose
- Built In Antifreeze System
- Water Sight Glass
- Electric Key Start
- Easy To Operate Water Pressure System
- All Exhaust And Water Outlets Routed Through Floor
- Rigid Framework With All Components Mounted Inside
- 250 Litre Water Tank
- 250kg Dry Weight
- Emergency Stop
- Petrol Honda Engine

**This Jetting Unit Operates To 3000psi And Delivers 8gpm Of Flow**



**All This For £4,950 +VAT**

**Free  
Installation  
In Your Van**





**The price for one of these Jetting machines is £4,950 +vat**

**Accessories Included In The Price:**

- 1x 15m 1/4" Mini Hose
- 1x Trigger Assembly
- 1x High Pressure Lance
- 2x Standard Nozzles 1/4"
- 2x Standard Nozzles 3/8"
- 1x Adaptor To Connect 3/8" Hose To 1/4" Hose

**Dimensions:**

**Length: 1000mm**

**Width: 900mm**

**Height: 1160mm**

**Weight: 250kg Dry**



**Free  
Installation  
In Your Van**



**This Machine is perfect for the domestic drain cleaning market and with the right nozzles will work on commercial jobs too, The machine is very powerful and versatile as you can use it with drain cleaning nozzles and switch over to a jet wash lance if you are doing more of a cleaning job**

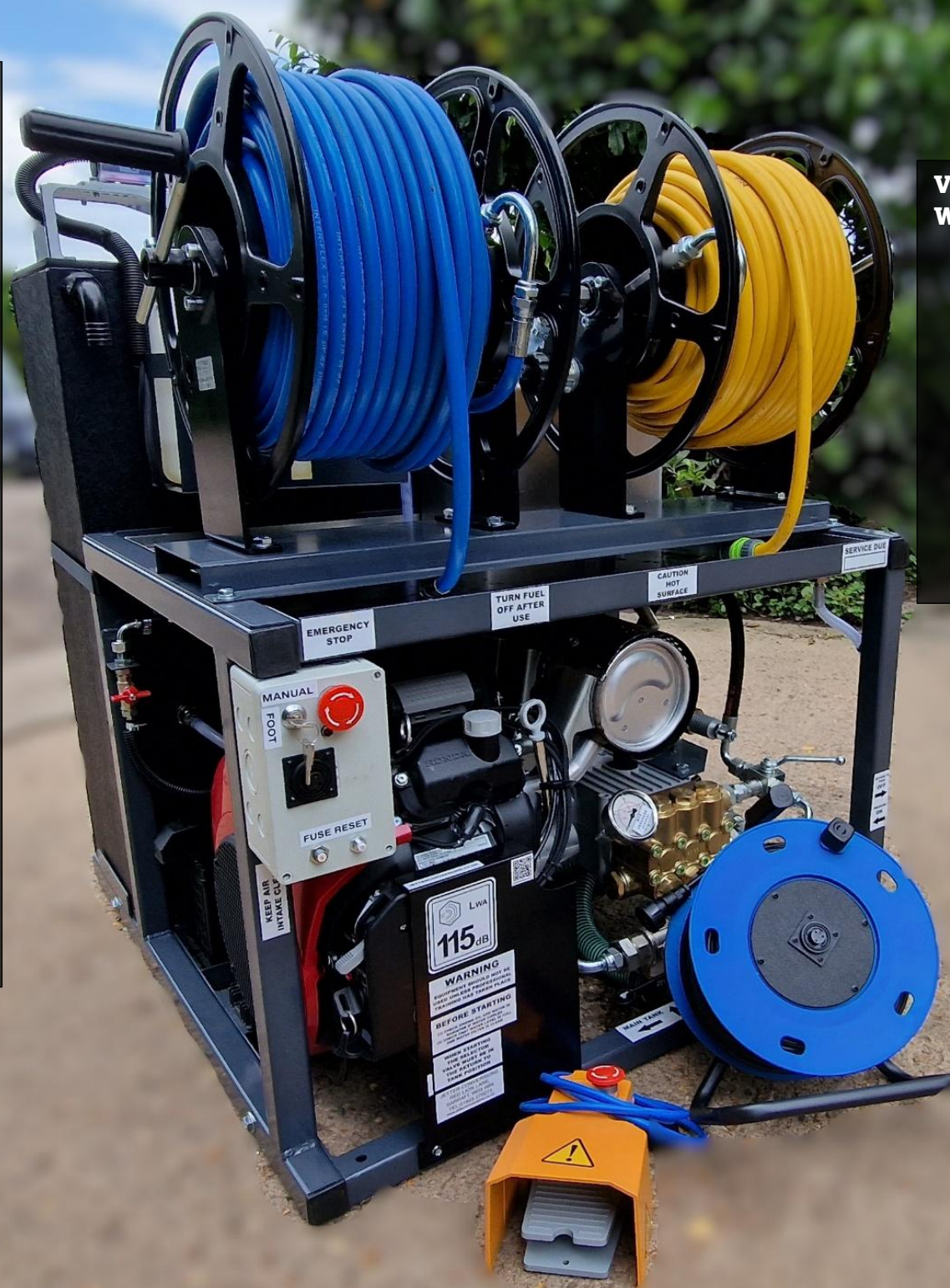


**We also build a hardwire version of this machine so if you are usually working by yourself and would rather a one man operation fitted then we can add the hardwire kit to the jetter which comes complete with a 50 Metre Extension Reel and Foot pedal which means you can operate the pressure from round the back of a property**



**This Is Our  
Hardwire Foot  
Pedal Version  
Of Our 3008  
Machine, And  
this Allows You  
To Operate The  
Machine Via A  
Foot Pedal Up  
To 50 Metres  
Away If You  
Are Working  
Alone.**

**£1,150 +vat**



**Very Simple To Use And Comes  
With:**

- 50 Metre Extension Reel
- Remote Solenoid On Top Of Tank
- Foot Pedal With Emergency Stop
- Key Switch To Use The Machine With Foot Pedal Or As A standard Machine
- 2x Fuse Reset switches

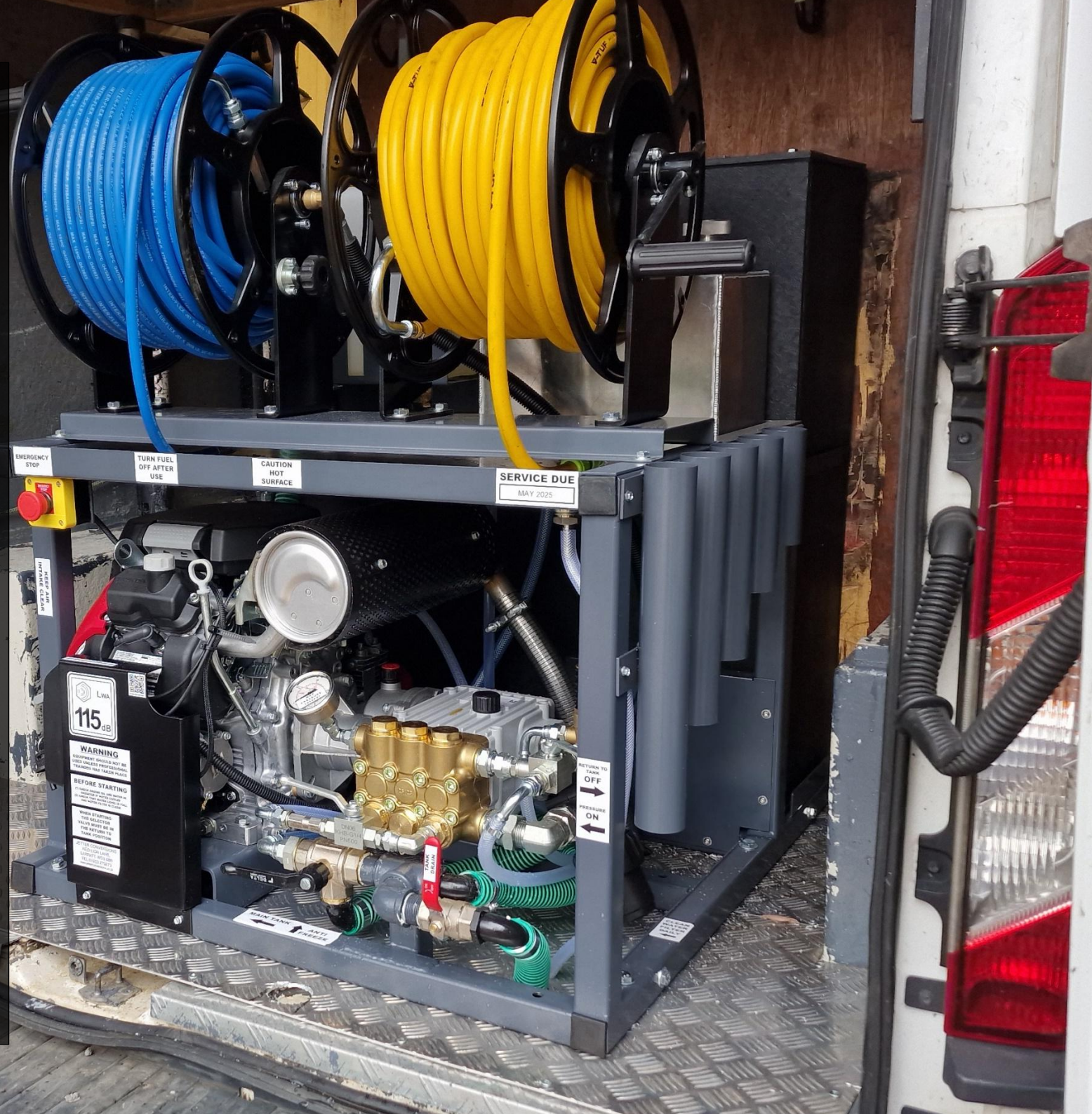
**Any Questions  
Please Ask**



## **Full Aftercare Support:**

**Here at Jetter Conversions we not only build, assemble and install the machines, we also do the yearly service and maintenance so you don't have to look anywhere else once purchased.**

**Simply give us a call and get booked in, we can sort almost any issue while you wait, even on our older machines but if you look after them and keep them clean, we have had machines coming back for a service that are still running strong after 20 years of use.**







**£450**

**XL Tank  
Dimensions**

**930mm**

**855 mm**

**600mm**

**The Only Difference in Measurements from Our Standard tank To Our XL Tanks Is The Depth, Our Standard Machine Has A Tank Depth Of 300mm And the XL Of 600mm**

**We Can Now Offer An Extra-Large Tank Fitted To These 3008 Jetting Machines Which Will Take The Water Capacity From 250 Litres To A Massive 500 Litres.**



**Key Holder £38**



**Nozzle Holder £24**





## Extra Nozzles



**HE Nozzle £80**



**Little Chipper £100**



**Spinning Nozzle £199**



**Tulip Nozzle x3 £200**



**Spinning Push Through £120**



**Rope Pulling Nozzle £95**



**Root Cutter £360**



**Chain Cutter £360**



**We have an onsite shop where we stock lots of drainage related items so you can give your van a full kit out if you are just starting up or just grab some hand tools or drain keys to make life a bit easier while on the job.**

**Dealers Of:**



**RatGate**  
RODENT PREVENTION SYSTEM

**Milwaukee**

**RIDGID**

### **What We Stock:**

- **Variety Of Jetting Nozzles**
- **Drain Keys**
- **Plungers and Drain Rods**
- **Hand tools**
- **Drain Tracing Dye**
- **Barriers And Cones**
- **Ratgates**
- **Airfreshner**
- **Gully Grabs**
- **Patch And Lining Equipment**
- **Resin**
- **Screwdrivers And Pry Bars**



**Our 3008 Jetting machine weighs in at around 250kg making it one of the lighter options out there, delivering 3000psi of pressure and 8gpm of water this compact machine has lots of advantages. 3000psi of pressure is plenty enough pressure to clean and unblock most domestic and commercial blockages and whilst only using 8 gallons of water per minute.**

**The main advantage of only using 8 gallons of water per minute is that it makes this machine very environmentally friendly which can sometimes help you win over a job or contract, this machine is roughly 50% more efficient than other machines on the market due to its high pressure and relatively low flow rate whilst maintaining good consistency to get jobs complete.**

**We also manufacture nozzles for these machines in house meaning we can really maximise the efficiency and effectiveness to clean or unblock any drain that you come up against as quickly as possible.**

**As well as manufacturing our own nozzles in house we also assemble and install these machines here at our workshop as well as service and repair, so you don't need to go hunting around looking for after sale support as we do it all here making your life as easy as possible. We carry all spares for machines and can usually get you back up and running regardless of the issue within an hour. Our team of highly trained staff know exactly how to fault find and repair these machines and a lot of the time we can diagnose the issue over the phone to sometimes save you a trip to us.**

**Some key advantages to these machines that you might not have thought of is the lightweight nature means that your fuel economy is better to and from jobs, it also puts less stress on your vans engine and suspension. The machine is powered by a Honda engine and a speck gearbox and pump unit which are very reliable parts meaning you will have good reliability.**





**We Can Now Offer One Extra Years Warranty On All New Jetting Machines That Come Back For Their First Service.**

Extended Warranty Only Includes Engine, Pump, Reels, Water Tank And Frame, All Wearable Items Such As: Swivels, Unloaders, Control Valves, Hoses And Nozzles Can Not Be Covered Under Warranty Due To Them Being Wearable Parts. We Will Do Our Best To Ensure Customer Satisfaction But Will Assess Each Warranty Claim Individually To Distinguish Between Faulty Parts Or Unproper Usage Of Machine. Extended Warranty Will Last For An Additional 12 Months From Date Of Purchase As Long As Your Jetting Machine Gets Serviced Between 10 Months And 14 Months Of The Original Purchase Regardless Of Usage. To Qualify For Extended Warranty The Jetting Machine Must Be Brand New And Purchased Through Us At Jetter Conversions. We Cannot Offer Warranty On Frozen Jetting Machines As This Is Down To The Operator Not Correctly Anit-freezing The Jetting Machine To Prevent Frost Damage.